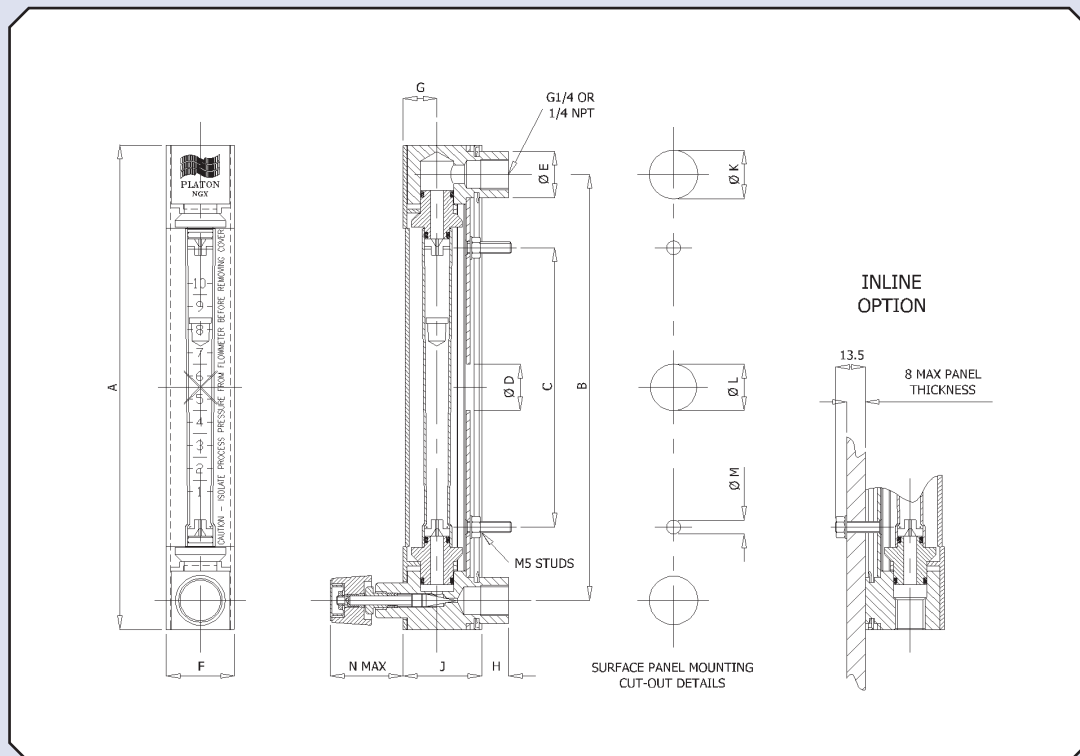


Platon Gapmeter Type NGX/LGX

INSTALLATION

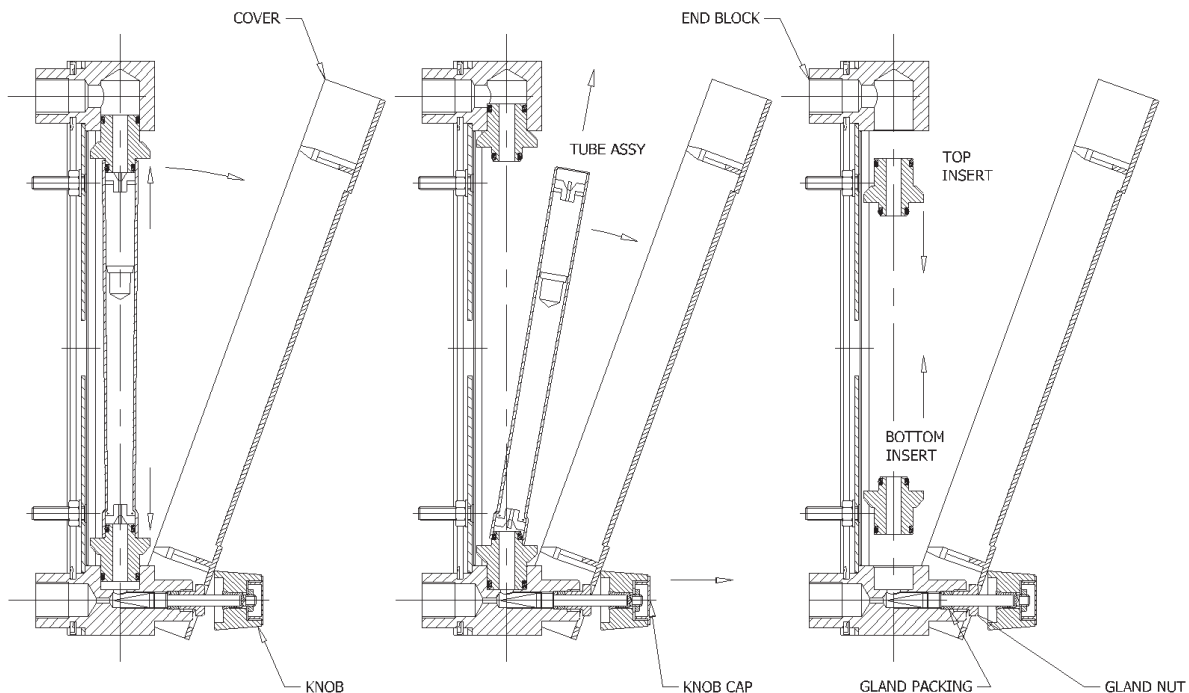
1. Remove all packing and check that the float moves freely.
2. Check that the float material is immune to corrosion and the seals resistant to solvent action of the process fluid.
3. Select the location of the flowmeter to avoid:
 - a) Condensation of vapour in the flowmeter.
 - b) Settling out of any sediment in the flowmeter.
4. Install in a valved loop, if frequent cleaning may be needed.
5. Arrange a bleed, if the process fluid is liable to freeze in the flowmeter.
6. Support connecting pipes so that the flowmeter is accurately vertical.
7. Avoid jets at entry or any other fitting causing turbulence likely to disturb float stability.
8. Read the top edge of the float.
9. When surface mounting the flowmeter, the 20mm diameter vent in the backplate should be free from obstruction to allow the safety strip to operate correctly. For Panel cut out details see Fig 1.



	A	B	C	ØD	ØE	F	G	H	J	ØK	ØL	ØM	N
NGX	209.5	184	121	20	20	30	14.5	12.5	34	21	20	6	36
LGX	133.5	108	65										

MAINTENANCE

1. Cover Removal: Isolate flowmeter from flow media (not using integral flow control knob). Open valve fully on meter. Pull cover forward evenly with both hands until the clip section of the cover is released. Angle the cover forward to allow access to the glass tube. To fully remove the cover, remove the valve knob first.
2. Tube Removal: Carefully move the tube downwards until the bottom insert is fully engaged in the bottom end block.
3. Carefully move the top insert up until it is fully engaged in the top end block.
4. Carefully move the tube upwards and gradually pull the top forwards until released from the bottom insert. (In order not to damage the glass only a slight angle is required to allow removal).
5. Insert Removal: Withdraw the inserts by pulling them towards each other, until clear of the end blocks.
6. O-Ring Replacement: This should be carried out carefully ensuring that no surfaces are damaged. Lubricating the O-rings using a small amount of suitable grease is advisable.
7. Insert Replacement: Reverse stage 5, ensuring both fully engaged in end blocks.
8. Tube Replacement: Locate the bottom of the tube onto the bottom insert and carefully move the tube down. Gradually push the top backwards until fully engaged on the bottom insert. Holding the tube squarely on the bottom insert, move the top insert down until the O-ring just meets the top of the tube. Holding the top insert firmly in place, move the bottom insert (& tube) upwards until the tube is fully engaged on both inserts. Replace safety cover before use.
9. Cover Replacement: Reverse stage 1.



Every effort has been made during the preparation of this document to ensure the accuracy of statements and specifications. However, we do not accept liability for damage, injury, loss or expense caused by errors or omissions made. We reserve the right to withdraw or amend products or documentation without notice.

H



LICO Electronics GmbH
 lederinger Strasse 31
 A-2320 Kledering, Austria
 E-mail: sales@lico.at | office@lico.at
 Tel.: +43 1 706 4300

www.mess-regeltechnik.at

LICO Mechatronic Kft.

Raba u. 4.
 H-2030 Erd, Hungary
 Email: sales@lico.hu / sales@lico.at
 Tel: +36 23 520 138

www.platon-direct.eu



05HWA0910