

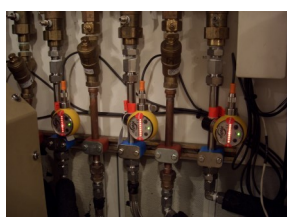
the **flow-captor**



**flow sensor (meter or switch)
for liquid media**

operating principle: calorimetric
 housing material: plastic or stainless steel
 sensorhead material: stainless steel, Titanium
 or Hastelloy

- insertion and inline version
- inline version with different sensor tube sizes
- separate adjustment of range and set-point
- analog display of actual flow and display of the adjusted set-point
- high measuring accuracy even at low flow rates
- wide range of temperature
- high pressure resistance
- robust industrial design
- encapsulation
- optionally with additional temperature output
- available with separate input meter



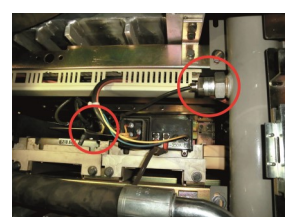
the **vent-captor**



**flow sensor (meter or switch)
for air and other gases**

operating principle: calorimetric
 housing material: plastic or stainless steel
 material sensor probe: ceramic with overglaze

- insertion and inline version
- inline version with different sensor tube sizes
- measuring ranges from 0-5 m/s up to 0-50 m/s
- detection of lowest flow rates
- for high temperature available as remote system
- robust industrial design
- encapsulation
- available with separate process input meter
- high reliability and long-term stability



the **foto-captor**



**hot metal detector (HMD)
for applications in steel mills**

- suitable for a large number of different working conditions
- minimum temperature response from 270° C to 800° C / 518° F to 1.472° F
- robust industrial version
- electronic device without any moving parts

the **proxi-captor**



**inductive proximity switch or distance meter
for detection in the steel industry**

- for switching distance up to 250 mm
- self-adjusting or adjustable
- housing made of stainless steel, aluminium or plastic material
- for high ambient temperature up to 200° C / 392° F
- compact or remote system

Many versions for a large variety of different industries:

water industry

(e. g. dosing systems, flow and air monitoring, pump protection)

process industry

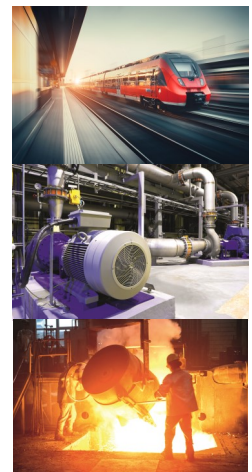
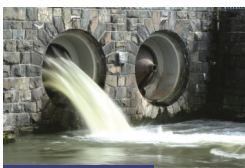
(e. g. chemical and food industry, monitoring of clean room ventilation)

energy und transport

(e. g. water power, wind energy, renewable energy, aviation, rail and automotive industry, transformer cooling, monitoring of flow and temperature)

steel industry

(e. g. hot rolling mills, coke plants, foundries, incineration plant, blast furnace plant, glass factory)



LICO Electronics GmbH
lederinger Strasse 31
A-2320 Kledering, Austria
E-mail: sales@lico.at | office@lico.at
Tel.: +43 1 706 4300

LICO Mechatronic Kft.
Raba u. 4.
H-2030 Erd, Hungary
Email: sales@lico.hu / sales@lico.at
Tel: +36 23 520 138