

# MACHINE SAFETY & AUTOMATION SOLUTIONS



**OUR GOAL MOTIVATION: INNOVATION**

## TABLE OF CONTENTS

<b>Who We Are</b>	p.3
<b>Stand alone Sensors</b>	p.4
• SSR Range	p.4
• AMX Range	p.4
<b>Non-Stand alone Sensors</b>	p.5
• ANATOM78S/98S	p.5
• OPTOPUSDEC	p.5
<b>Cylindrical Sensors</b>	p.6
• 7SSR24V	p.6
• ANATOM M18	p.6
<b>MASSIMOTTO Range &amp; RFID Sensors</b>	p.7
• MASSIMOTTO	p.7
• XORF-SA-MKT	p.7
<b>Hygiene Design Sensors</b>	p.8
• HYGTECH-AR-MKT	p.8
• M18-HY-MKT	p.8
• 7SSR-HY-MKT	p.8
<b>High and Low Temperature Sensors</b>	p.9
• ANATOM78S-N-MKTS	p.9
• TRITHON-N-MKTS/P-MKTS	p.9
<b>Sensors with Integrated Magnetic Holding Force</b>	p.10
• EPINUS2K-NT-MKTS	p.10
• EPINUS4K	p.10
• BOSTER	p.10
<b>Interlocking Solutions</b>	p.11
• SUPERMAGNET	p.11
• ANAGUARD	p.11
• VIGILGUARD	p.11
<b>Safety Relays</b>	p.12-13
• AWAX26XXL	p.12
• CO13XXL	p.12
• SPEEDTRONIC	p.13
• COM3C	p.13
<b>Automation Products - Human/Machine Interface</b>	p.14-15-16
• Touch-Sensitive Buttons: KAPIX	p.14
• Two-Hand Control Buttons: KOB101T	p.14
• Optical Control Buttons: KOB 308/508T	p.15
• Optical Button for Clean Room: KOB608	p.15
• RFID Access Control Solution: XS308	p.16
• RFID Access Control Solution: XR530	p.16
• Card access control with RFID : XRS485	P.17
• Pressure switch & vacuum switch of machine safety	P.18
• Accesories	P.19

All our safety switches are supplied with anti-tamper screws, washers and key



## WHO WE ARE

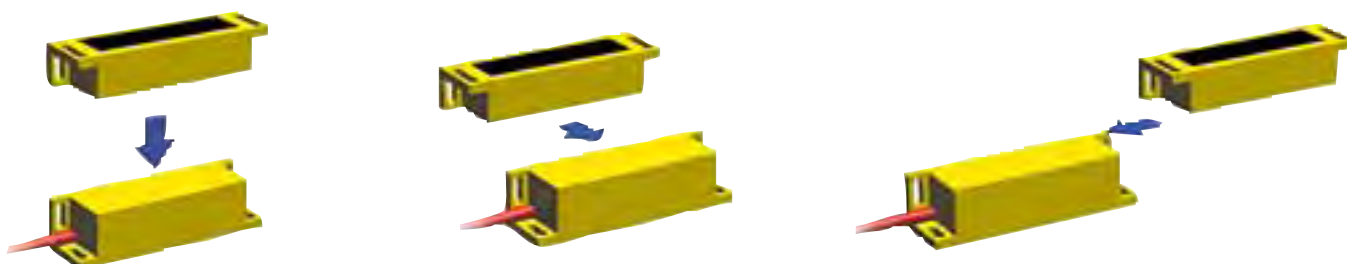
Specialized in the production of machine safety components, automation, and human machine interface, COMITRONIC-BTI has been manufacturing a wide range of products through the **ACOTOM® process since 1993**.

This **unique process** is based on a electronic decoding system that detects and receives two independent magnetic fields, which makes the product tamper-proof and does not include a reed contact or transponder system, meaning a sustainable life cycle.

The sensing distance of 7 to 12 mm, depending on the model, offers van easy installation and allows (you) to work through a 6mm-thick stainless steel wall. The sensor can be embedded in the structure of the machine (low 2mm hysteresis). The LED traces the exact state of decoding regardless of the number of sensors in the series.



### Typical sensing directions :



### We are present in different sectors of activity such as :

- Food industry (dairy, ready-made meals, meat cuts...)
- Packaging (bottling, filling, bagging...)
- Cosmetics
- Pharmaceuticals
- Running vehicles (armored trucks, refrigerated trucks, garbage trucks)

# STAND ALONE SENSORS

## Stand alone contactless sensors with electromechanical technology

### SSR Range



- Redundant safety contacts: 2A / 250V
- Dry contacts free of potential (relay outputs)
- Safety level without external controller: PLc, category 1 according to ISO13849-1
- **Safety level with external controller (AWAX model): up to PLe, category 4 according to ISO13849-1**
- Material: PA6 or SS316L with polish mirror finishing, laser engraving and traceability by mechanical punching available (depending on version)
- IP68 (PA6) or IP69K (Stainless steel)
- Electrical connection: 3, 6, 12 m cable or 50 cm cable with M12/8PIN connector depending on version (MKT)
- Integrated LED diagnostics and/or NC auxiliary line

#### \*New: 5SSR24 P/S:

- 3x2A/250V contacts
- 2NO + 1NC : parallel NC contact (P version) or serial contact (S version)
- Safety level without external controller: PLc, category 1 according to ISO13849-1
- Compatible with a T-Splitter for a fast and quick automatic series connection



### AMX Range



- Redundant safety contacts: 2A / 48V
- Dry contacts free of potential (relay outputs)
- Integrated auto-control
- 2 million mechanical actions 2A at full load guaranteed
- Safety level without external controller: PLc, category 3 according to ISO13849-1
- Safety level with external controller (AWAX model): up to PLe, category 4 according to ISO13849-1
- Material: PA6 or SS316L with polish mirror finishing, laser engraving and traceability by mechanical punching available depending on version
- IP68 (PA6) or IP69K (Stainless Steel)
- Electrical connection: 3, 6, 12 m cable or 50 cm cable with M12/8PIN connector depending on version (MKT)
- Integrated LED diagnostics and/or NC auxiliary line (on versions 3 and 5)



# NON STAND ALONE SENSORS

Ideal solutions for serie installation (up to 30 sensors with AWAX controller)

## ANATOM78S/98S



- Safety contacts/diagnostics: 2 x NO 0.8A/24V max redundant / 1 x PNP contact NC 250mA (78S) or 1 x PNP contact NO 250mA (98S)
- Static contacts - 100% electronic contacts
- Safety level with external controller (AWAX model): up to PLe, category 4 according to ISO13849-1
- Material: PA6 or SS316L with polish mirror finishing, laser engraving and traceability by mechanical punching available depending on version
- IP68 (PA6) or IP69K (Stainless Steel)
- Electrical connection: 3, 6, 12 m cable or 50 cm cable with M12/8PIN connector depending on version (MKT)



## OPTOPUSDEC: miniature solution



- Safety contacts/diagnostics: 2 x NO 0.4A max / 24V redundant / 1 x PNP contact NF 250mA
- Static contacts - 100% electronic contacts
- Safety level with external controller (AWAX model): up to PLe, category 4 according to ISO13849-1
- Material: PA6 or SS316L with polish mirror finishing, laser engraving and traceability by mechanical punching available depending on version
- IP68
- Electrical connection: 3, 6, 12 m cable or 50 cm cable with M12/8PIN connector depending on version (MKT)



# CYLINDRICAL SENSORS

## 7SSR24V (M30)



- Safety contacts/diagnostics: 2 redundant NO 1A/48V / 1 x PNP contact NC 1A
- Safety level without external controller: PLc, category 1 according to ISO13849-1
- Safety level with external controller (AWAX model) : up to PLe, category 4 according to ISO13849-1
- Material: SS316L with polish mirror finishing, laser engraving and traceability by mechanical punching available depending on version
- IP69K front, IP67 back
- Electrical connection: 3, 6 or 12 m cable
- Diameter: M30



IP69K



+60°C  
-25°C



Compatible  
with PLC

## ANATOM M18



- Safety contacts/diagnostics: 2 redundant NO 0.8A max / 24V + 1 x PNP contact NC 250mA
- Safety level with external controller (AWAX model): up to PLe, category 4 according to ISO13849-1
- Material: Copper Nickel
- IP67
- Electrical connection: M12 metal base
- Diameter: M18



IP67



+60°C  
-25°C



Compatible  
with PLC

# MASSIMOTTO RANGE - RFID SENSORS

## MASSIMOTTO



Safety sensor for single and double doors for simple and efficient serie installation. This solution exists in a stand-alone version (X5) with choice of manual (AR) or automatic (SR) reset and as a non stand alone version (ANA).

- Safety contacts/diagnostics:
  - . ANA : 2 x NO 0.8A max / 24V redundant / 1 x NF (78S) or 1 x NO (98S) 250mA
  - . X5 : 2 x NO 2A / 48V redundant / 1 x PNP 250mA auxiliary
- Safety level without external controller: PLc, category 3 according to ISO13849-1
- Safety level with external controller (AWAX model) : up to PLe, category 4 according to ISO13849-1
- Material: Polycarbonate
- IP67
- Electrical connection: 1 or 2 M12/8PIN connector for a quick serie connection
- With single or dual transmitters



IP67



+60°C  
-25°C



Compatible  
with PLC

## XORF-SA-MKT



Safety sensor with 125 kHz RFID coding

- Solution adapted to vehicles (E2 UTAC certified)
- RFID sensor with 16 million codes available
- Code programmable by self-learning (no software or PC) => tamper-proof system
- Detection distance : up to 20mm
- Safety contacts/diagnostics: 2 x NO 50mA / 30V redundant and 1 x PNP 50mA
- Safety level with safety relay : up to PLe, category 4 SIL3 according to ISO13849-1
- Material: PA6
- IP68
- Electrical connection: 50cm PUR cable with M12 connector



Intertek  
5008891



IP68



+50°C  
-30°C



Compatible  
with PLC

# HYGIENE DESIGN SENSORS

## HYGTECH-AR-MKT



Hygtech compact safety sensor designed for the food industry and other harsh environments. No cavity, no holes => avoid any risk of bacteria development. Designed with slopes to avoid any water stagnation

- Safety contacts/diagnostics: 2 x NO / 1 x NC
- Safety level with external controller (AWAX model): up to PLe, category 4 according to ISO13849-1
- Material: SS316L with polish mirror finishing, laser engraving and traceability by mechanical punching
- IP69K
- Electrical connection: connection by M12/8PIN connector overmolded to a 50 cm or 220 cm PUR cable (MKT)
- Rear mounting (AR)
- Quick serie installation thanks to T-Splitter
- LED diagnostics 3 colors



IP69K



+80°C  
-25°C



Compatible  
with PLC

## M18-HY-MKT (M18)



- Safety contacts/diagnostics: 2 x NO / 1 x NC
- Safety level with external controller (AWAX model): up to PLe, category 4 according to ISO13849-1
- Material: SS316L with polish mirror finishing, laser engraving and traceability by mechanical punching
- IP69K
- Electrical connection: connection by M12/8PIN connector overmolded to a 50 cm or 220 cm PUR cord (MKT)
- Diameter: M18



IP69K



+80°C  
-25°C

## 7SSR-HY-MKT (M30)



- Safety contacts/diagnostics: 2 x NO 1A/48V / 1 x NC
- Safety level without external controller: PLc, category 1 according to ISO13849-1
- Safety level with external controller (AWAX model) : up to PLe, category 4 according to ISO13849-1
- Material: SS 316L with polish mirror finishing, laser engraving and traceability by mechanical punching
- IP69K
- Electrical connection: connection by M12/8PIN connector overmolded to a 50 cm or 220 cm PUR cord (MKT)
- LED indicating the decoding status and the position of the door
- Diameter: M30



IP69K



+70°C  
-25°C



Compatible  
with PLC



# HIGH AND LOW TEMPERATURE SENSORS

## ANATOM78S-N-MKTS



- Safety contacts/diagnostics: 2 redundant NO 0.8A max / 24V + 1 x PNP contact NC 250mA
- Safety level with external controller (AWAX model): up to PLe, category 4 according to ISO13849-1
- Material: SS316L with polish mirror finishing, laser engraving and traceability by mechanical punching
- IP69K
- Electrical connection: 50 or 220 cm ultra flexible silicone cable with M12/8PIN (MKTS) connector



IP69K



+125°C  
-40°C

## TRITHON-N-MKTS/P-MKTS



TRITHON-N-MKTS

- Safety contacts/diagnostics: 2 redundant NO 1A / 24V + 1 x PNP 1A NC
- Safety level with external controller (AWAX model): up to PLe, category 4 according to ISO13849-1
- Material: SS316L with polish mirror finishing, laser engraving and traceability by mechanical punching
- IP69K
- Electrical connection: 50 or 220 cm ultra-flexible silicone cable with M12/8PIN (MKTS) connector
- Fixation : central (N) or lateral (P)



IP69K



+110°C  
-30°C



TRITHON-P-MKTS

# SENSORS WITH INTEGRATED MAGNETIC HOLDING FORCE

## EPINUS2K-NT-MKTS



Sensor with integrated magnetic holding force and resistant to high/low temperatures.

- Integrated holding force: 2kg
- Safety contacts/diagnostics: 2 redundant NO 250mA / 24V + 1 x PNP NC 250mA
- Safety level with external controller (AWAX model): up to PLe, category 4 according to ISO13849-1
- Material: SS316L with polish mirror finishing, laser engraving and traceability by mechanical punching available depending on version
- IP69K
- Electrical connection: 50 or 220 cm ultra-flexible silicone cable with M12/8PIN (MKTS) connector
- 100% electronic contacts
- Shock resistance: 30g



2 Kgs



+125°C  
-40°C

## EPINUS4K



- Integrated magnetic holding force: 4kg
- Safety contacts/diagnostics: 2 redundant NO 0,8A / 24V + 1 x PNP NC 250mA
- Safety level with external controller (AWAX model): up to PLe, category 4 according to ISO13849-1
- Material: SS316L with polish mirror finishing, laser engraving and traceability by mechanical punching available depending on version
- IP68
- Electrical connection: 3, 6, 12 m cable or 50 cm PUR cord M12/8PIN (MKT)
- 100% electronic contacts
- Shock resistance: 30g



4 Kgs



+70°C  
-25°C



Compatible  
with PLC

## BOSTER



Standalone sensor with magnetic holding force and relay outputs

- Integrated holding force: 4kg
- Safety contacts/diagnostics: 2 redundant NO 2A / 50V + 1 x PNP NC 250mA
- Integrated auto-control
- Safety level without external controller: PLc, category 3 according to ISO13849-1
- Safety level with external controller (AWAX model): up to PLe, category 4 according to ISO13849-1
- Material: SS316L with polish mirror finishing, laser engraving and traceability by mechanical punching available depending on version
- IP67
- Electrical connection: 3, 6 or 12 m cable
- Shock resistance: 10g



4 Kgs



+60°C  
-25°C



Compatible  
with PLC

# INTERLOCKING SENSORS

## SUPERMAGNET



Electromagnetic controlled locking solutions

- Electro-magnetic holding force: from 30 to 90kg
- 2 locking modes: locked with power ON(R) / with power OFF (E)
- Safety contacts/diagnostics: 2 redundant NO 250mA / 40V + 1 x PNP NC 125mA
- Safety level with external controller (AWAX model): up to PLe, category 4 according to ISO13849-1
- Material: polycarbonate (PL) or SS316L with mirror polish finished, laser engraving and mechanical punching traceability (OX)
- Up to IP69K
- Operating temperatures: -25°C to +50°C
- Electrical connection: 50cm PUR cable with M12/8 pins connector

## ANAGUARD



Coded safety interlocking device, small size, ideal for small guard doors

- Holding force: up to 100kg
- 2 locking modes: locked with power on (R) / with power off (E)
- Length of coded bolt /detection distance : 9 mm/3 mm
- Safety contacts/diagnostics: 2 x NO 400mA / 24 Vdc/ac + 1 x NC / 400 mA / 24 Vdc/ ac
- Safety level with external controller (AWAX model): up to PLe, category 4 according to ISO13849-1
- Material: PA6 +30% reinforced fiberglass
- Up to IP65
- Operating temperatures: -5°C to +40°C
- Electrical connection: M12/8PIN connector or cable (W) depending on the version

## VIGILGUARD



Coded safety interlocking device for heavy industry

- Holding force: up to 200kg
- 2 mounting positions: pulling door (T) / pushing door (P)
- Bolt stroke: 14mm
- Safety contacts: 2 x NO 2A / 50V
- Auxiliary contacts: 2 x PNP / 500 mA
- SMART CONSUMPTION for serie installation with minimal power consumption
- Safety level with external controller (AWAX model): up to PLe, category 4 according to ISO13849-1
- Material: PA6 +30% reinforced fiberglass and stainless steel bolt
- IP65
- Operating temperatures: -15°C to +45°C
- Electrical connection: 50 cm PUR cable with M23 connector or cable
- Optional Emergency Escape Handle (AT)

# SAFETY RELAY

## AWAX26XXL



Safety relay suitable for different applications for control of Acotom process sensors/ mechanical switches/emergency stops / interlocking devices

- Output contacts:
  - . AWAX26XXL (ETL): 3 NO redundant 8A / 250V + 1 NC 8A / 250V in series
  - . AWAX26XXL-T6: 3 NO redundant 6A / 250V + 1 NC 6A / 250V in series
  - . AWAX26XXLP: 3 NO redundant 8A / 250V + 1 NC 8A / 250V parallel
  - . AWAX26XXLP-T6: 3 NO redundant 6A / 250V + 1 NC 6A / 250V parallel
- Safety level: PLe, category 4 according to ISO13849-1
- Two-channel solution
- DLC system => allows the detection of short circuits in 2 micro-seconds
- Reset: configurable by dip-switch (SR=Automatic, N=manual)
- Indication: 3 LEDs for diagnostics



DETECTION OF  
CURRENT CIRCUIT



+60°C  
-20°C

\* Other version available: 120/240 V

## CO13XXL



Single or dual channel safety relay : allows the management and control of safety sensors as well as emergency stops

- Safety contacts/diagnostics: 2 x NO redundant 8A / 250V + 1 x NC 8A / 250V redundant parallel + 1 x NO static 400 mA
- Safety level: up to PLd, category 3 according to ISO13849-1
- Reset: configurable by dip-switch (SR=Automatic, N=manual)
- Indication: 3 LEDs for diagnostics



+60°C  
-20°C

\* Other version available: 120/240 V

# SAFETY RELAY

## COM3C



Two hands control solution

- Safety contacts/diagnostics: 2 x NO redundant 8A / 250V + 1 x NC 8A / 250V parallel redundant
- Safety level: PLe according to ISO13849-1
- Safety category: IIIC
- Reset: automatic with simultaneity control at 300ms
- Indication: 3 LEDs for diagnostics



**+40°C**  
**-20°C**

\* compatible with our KOB101T and FZ-BITECH

## SPEEDTRONIC



Stand still safety relay to be connected with an interlocking system. Allows detection of complete shutdown on motor windings

- Safety contacts: 3 x NO redundant 8A / 250V
- Diagnostics: 1 x NF parallel redundant 8A / 250V
- Security level: up to PLe, category 4 according to ISO13849-1
- Adjustable time delay with wheeling codes between 2 and 7 seconds
- Sensitivity adjustable between 20 and 700 mV
- Compatible with a three-phase motor and variable frequency drive
- Reset: automatic
- Star, triangle, and star triangle starting possibilities



**CONTROL  
SPEEDS  
AND SPEED 0**



**+60°C**  
**-20°C**

\* can be combined with our interlocking systems (SM, ANAGUARD, and VIGILGUARD)

# AUTOMATION PRODUCTS

## HUMAN/MACHINE INTERFACE



ROBUST AND  
RESISTANT IK08



DIRT CONTROL



CONTROL OF  
FOREIGN BODIES

### Touch-Sensitive Buttons: KAPIX

Three-color light touch control buttons with "force 0" capacitive technology



- Diameter available : 22/30 mm
- Electrical contact: 1 NO, 2 NO, 1 NO + 1 NC, 400mA / 24V (up to two electrical contacts)
- Compatible with PLC (L version) for a great flexibility of use & LEDS management
- Activation distance: when touched ("force 0" = reduction of RSI because no effort)
- IP69K on the surface (splash water immunity)
- Function: Momentary, toggle, or time delayed
- Indication: Two-color / three-color LED mounted on two independent circuits
- Operating temperatures: -20°C to +55°C
- Electrical connection: 3m cable or 50cm cord with M12 / 8PIN connector or 1.5mm<sup>2</sup> screwless terminal block or 0.5mm<sup>2</sup> screw terminal block
- Customization by laser marking ("ON", "OFF", "RESET" ....) and button body colors
- Housing : TR90UV



CAPACITIVE  
TECHNOLOGY



COMPATIBLE WITH  
GLOVES EN388

### Two-Hands Control Buttons: KOB101T & FZ-BITECH-50

Two-hands touch control button with dual technologies capacitive (touch detection) and optical (triple infrared beam detection)



- Safety contacts: 1 x PNP NO / 50mA OSSD and 1 x PNP NC / 50mA OSSD
- Safety level with COM3C controller: PLe
- Safety category with COM3C IIIC
- Activation distance: when touched ("force 0" = reduction of the RSI because no effort)
- Diagnostics: fraud, simultaneity, short-circuiting of contacts with multi-function illuminated ring
- Reset: automatic with two buttons correctly activated
- IP67
- Operating temperatures: -25°C to +60°C
- Electrical connection: Screw-less terminal 1.5mm<sup>2</sup>
- Ergonomic stainless steel support (BX1 or BX2)



TECHNOLOGIE  
CAPACITIVE



TECHNOLOGIE  
OPTICAL

Available for sale :  
FZ-50-BYTECH (IP69K)

\* Compatible with COM3C

# AUTOMATION PRODUCTS

## HUMAN/MACHINE INTERFACE



ROBUST AND  
RESISTANT IK08



DIRT CONTROL



CONTROL OF  
FOREIGN BODIES

### Optical control buttons: KOB308 /508T

Contactless Control Button with Optical Technology (308) or Bi-Technology (Optical and Capacitive) (508T)



KOB308



KOB508T

- Diameter 30mm (308) / 50mm for button and 100mm with ring (508T):
  - . KOB308 L: activation distance 17mm
  - . KOB308 S: activation distance 3mm
  - . KOB 508T: activation distance between 5 and 20mm
- Standard action: momentary, toogle or time delayed
- Possible actions on request or with KOB-SOFT software: toogle or timed delayed
- Red LED ring light indication:
  - . KOB508T: LED indication when optical beam detected
  - . KOB308: LED indication when optical beam detected or LED indication thanks to a PLC
- Electrical contacts:
  - . KOB508T: 2NO (PNP) / 2NC (PNP) / 1NO +1NC (PNP)
  - . KOB308: 1NO (PNP or NPN) / 1NC (PNP or NPN)
- IP67
- Electrical connection: Screw-less terminal 1.5mm<sup>2</sup>

### Optical Button for Clean Room: KOB608



Non-contact button with optical technology operating through a lexan or glass wall

- Diameter: 50mm
- Electrical contact: 1NO 30V / 400mA static contact free of potential
- Action: momentary
- Red, green, amber tri-colored LED managed by 3 independent inputs
- Detection distance: 40mm (behind Plexiglas) / 10mm (in direct action)
- IP67
- Electrical connection: 20 cm cable



COMPATIBLE WITH  
GLOVES EN388

# AUTOMATION PRODUCTS

## HUMAN/MACHINE INTERFACE

### RFID access control solution: XS308

---



Compact reader and recorder (diameter 30) of RFID tag 125 KHz for PLC

- Communication network:
  - . RS485 MODBUS (RTU): hexadecimal programming up to 5 bytes
  - . RS232 (ASCII): Writing up to 5 characters
- RS485 contact: 1 x PNP strobe
- Life cycle: 20 years
- Detection encoding: infinite
- Solution for networking, up to 32 readers
- IP69K surface/ IP67 back
- Operating temperatures: -20°C to +60°C
- Electrical connection: screwless terminal
- Case: TR90UV



+60°C  
-20°C



ROBUST AND  
RESISTANT IK08

### RFID access control solution : XR530

---



Compact, stand alone access control solution with unlocking control via RFID tag

- 125kHz RFID technology with 16 million possible codes by self-learning system
- Contact for door release: 1.8A (PNP)
- Detection distance up to 25mm
- 2 alarms outputs:
  - . Alarm 1: Door open more than 120s (P version) or more than 60s (P1 version)
  - . Alarm 2: Forced door, alarm for 60s (version P) or 30s (version P1)
- LED diagnostics
- Management of up to 9 groups (version E)
- Electrical connection: 3m cable
- Compact, ergonomic, can be embedded in the structure, frame of the machine
- Housing PA6



+70°C  
-25°C



# CARD ACCESS CONTROL WITH RFID

## Card access control with RFID : XRS485



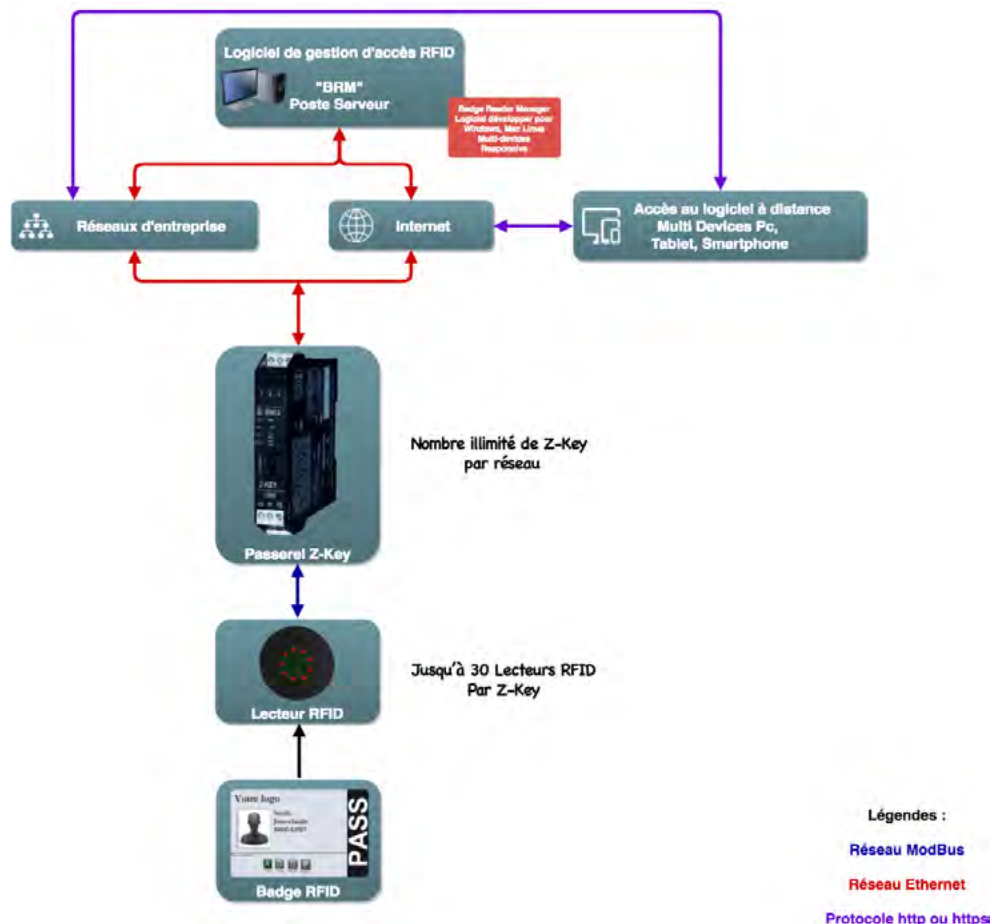
Card access control with RFID encoding and traceability

**RFID sensor with 16 million codes**

**Lock control and «burglar» alarm**

**Supervision, traceability via PC, RS485 network and output contacts**

- Max activation distance: up to 45 mm
- Contact/diagnostics: 1 x 1.8A PNP timed 5s/2 x 100mA PNP
- Alarm 1 (120s failure to close) and 2 (30s breaking open)
- Indicator: LED indicates code recognition
- Reset: automatic
- IP 67
- Temperature: -20 °C to +60 °C
- Marking: pad printing + serial number for traceability
- Options:
  - . Software for real-time monitoring with openings traceability via PC (ref MDB13-SP.)
  - . Software programming of badges and network configuration (ref MDB13-PR.)
  - . Automatic network connection (LKS485): up to 8 cascading boxes and 4 readers per box 32 readers. Individual contact outputs on each box
  - . Badge nail, screw, plate screw, key chain, card ... etc.
- Application example: access to luxury showcases with lock control and traceability



# PRESSURE SWITCH & VACUUM SWITCH OF MACHINE SAFETY

## Pressure switch & vacuum switch : PS & VC

---



Controls gas and fluid pressure in positive safety mode

- Controls the lack of pressure in plastic injection tools
- Robot, palletiser/depalletiser enclosure
- Packaging machine
- Manipulator / Vacuum switch
- Pressurised closed enclosure
- 2 free NO contacts of 30V/2A and a 24V/2A NC contact
- Diagnosis by the NC contact
- Water resistant electrical connection M12
- Pneumatic/hydraulic connection female G1/4 and quick connector for 8 mm hose
- Direct solenoid valve control

### Pressure switch or vacuum switch?

#### Version VC :

Control of vacuum.

#### Version PS-Nb :

For authorisation to open a machine guard after checking the low pressure threshold or venting of a pneumatic system. Safety contacts are closed below the threshold.

#### Version PS-Nh :

For shutting down an installation in case of underpressure. Safety contacts are open under the threshold

## ACCESSORIES

**All our safety switches are supplied with anti-tamper screws, washers and key**



**Handle compatible with BOSTER 4KG & EPINUS 4K**



**Handle with screw cover compatible with SUPERMAGNET, ANATOM SERIE & EPINUS 2K-DP**



**Handle compatible with EPINUS 2K**



**Handle in stainless steel compatible with EPINUS 2K**



**Anti-panic handle compatible with VIGILGUARD**



**T-SPLITTER M12.8 - Automatic serial connection of safety switches. Easy mounting & wiring. Fast installation**

## Distributor:



**LICO Electronics GmbH K**  
lederinger Strasse 31  
A-2320 Kledering, Austria  
E-mail: [sales@lico.at](mailto:sales@lico.at) | [office@lico.at](mailto:office@lico.at)  
Tel.: +43 1 706 4300

[www.lico.](http://www.lico.)

**LICO Mechatronic Kft.**  
Raba u. 4.  
H-2030 Erd, Hungary  
Email: [sales@lico.hu](mailto:sales@lico.hu) / [sales@lico.at](mailto:sales@lico.at)  
Tel: +36 23 520 138

[www.lico.hu](http://www.lico.hu)